

COMMERCIAL - RESIDENTIAL

AUDIO 2011

speco technologies®
simply unique.



2010 marks a special year for Speco Technologies. It was exactly 50 years ago that we opened for business and began to provide quality audio products at affordable prices to our customers. The times have changed, the market has changed and over that period, we've seen just about every kind of economic condition. One thing has stayed the same... 50 years later, Speco Technologies still provides quality audio products at affordable prices to our customers.



Unique Products

We at Speco Technologies have always prided ourselves on providing products that not only were innovative and useful, but that would not break our customer's budget. This philosophy remains true more than ever today. When in-wall and in-ceiling speakers were first gaining in popularity, Speco Technologies was at the forefront. Today, our product line is something we continue to be proud to put our name on and we constantly strive to find ways to make it even more appealing. You will find several new products in this catalog that we are excited to introduce. On page 12 we've introduced our new PAP160A, a 160W RMS self-contained P.A. system with built-in iPod® dock, USB MP3 player and 12" full-range speaker. This unit is befitting of a very wide range of indoor applications, including classrooms, conference rooms and gymnasiums, while its portability makes it the perfect choice for outdoor events. Also, check out our new All-Weather Elite Series (AWE) of indoor/outdoor speakers on pages 18 and 32. For applications in which our AWX speakers may be too large, these compact 4" speakers are available in both black and white and with or without transformers. Most importantly, our AWE Series has a striking yet stylish look your customers will surely love. In this catalog, we have also introduced a new line of wireless UHF microphones on page 20. This single channel system includes a wireless UHF handheld microphone and a wireless UHF lapel bodypack microphone.

Unique Customers

You will find Speco Technologies audio products installed almost anywhere imaginable: offices, schools, homes, restaurants/bars, retail, public facilities, houses of worship, health clubs, etc. We view each and everyone one of these customers as special and worth going the extra mile for. We know our customers have many options for commercial and residential audio and are extremely thankful for those who choose Speco Technologies for their projects. As a result, we view no job as too big or too small and are excited to take the opportunity to roll up our sleeves and tackle it together. We feel our products are an extension of those who use them and should be viewed as equally unique and special. That's what drives us forward each day; bringing you the products and services to make your installations the most they can be.

The past half-century is only the beginning of how Speco Technologies will revolutionize your audio experience!



Web: www.specotech.com
Toll Free: 1-800-645-5516
In Metro NY: 631-957-8700
Fax: 631-957-9142 or 631-957-3880
Address: 200 New Highway, Amityville, NY 11701

ALL SPECIFICATIONS SUBJECT TO CHANGE WITHOUT NOTICE. WE ARE NOT RESPONSIBLE FOR TYPOGRAPHICAL ERRORS.
© 2010 Speco Technologies. All rights reserved.

Commercial Audio

a-live™ Multi-Room Digital Audio System	4
FACD Series, Professional Series P.A. Amplifiers	6, 7
Multi-Source / Multi-Zone P.A. Amplifier	8
Platinum Series 260 Watt Amplifier	9
Contractor Series Amplifiers	10
Professional Series P.A. Amplifiers, Mobile P.A. Amplifier, Megaphone	11
Portable 2-Way Amplified Speaker with iPod® Dock and MP3 Player	12
MA Series Speakers	13
Nexus™ Contractor UL® Series Speakers	14
8" 70/25V Speakers, Grilles, Combos - Classic	15
8" 70/25V Speakers, Grilles, Combos - Modern, 8" Wall Baffle with Transformer	16
70V/25V Ceiling Tile, Hanging Pendant Speaker	17
All-Weather Speakers with Transformers	18
Professional Communications & Mini Speakers	19
UHF 128/700 Frequency-Selectable Microphones	20
Microphones & Accessories	21
Microphone & Transformer Accessories	22

Weatherproof Paging Horn Speakers	23
Weatherproof 8Ω P.A. Horn Speakers	24
70/25 Volt Weatherproof P.A. Horn Speakers, Alarm Sirens, Projection Horn Casings & Drivers	25
P.A. Horn Speaker Comparison Chart	26
Alert Series P.A. Horn with Strobe Flasher, Digital Deterrent™ Audio Kit	27
P.A. Speaker, Strobe Flasher, Power Supply, Intercoms & 70/25V Volume Controls	28

Residential Audio

Custom Builder, Classic Series In-Ceiling Speakers	30
Series 25 In-Ceiling Speaker Line, In-Ceiling Speaker Comparison Guide	31
All-Weather Elite & Extreme Series Speakers	32
Speaker Support Brackets	33
Speaker Selector Distribution Centers	34
Attenuators, 8Ω Volume Controls & Accessories	35
Audio Glossary	36
Part Number Cross Reference Guide	37
Model Number Index	38
Audio Product Warranty Information	39

3 Channel XLR Microphone Mixer

NEW

Page 22

MMB3XLR

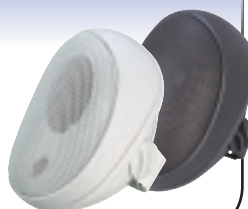


All-Weather Elite Series 4" Outdoor Speakers

NEW

Pages 18, 32

SP4AWE



FACD Series Amplifiers

Page 6

P240FACD



UHF 700 Frequency-Selectable Single-Channel Receiver & Microphones

Page 20

NEW

MUHF100

Receiver

MUHFHH

Handheld Mic

MUHFLP

Lapel Mic



12" 2-Way Portable Amplified Speaker with iPod® Dock & MP3 Player

NEW

Page 12

PAP160A



Series 25 Line 6.5" In-Ceiling Speakers

Page 31

SP625C



a-live™ allows you to play networked digital music, as well as up to 6 analog sources, directly from your PC to any and all zones. The same streamed audio file can be played independently amongst different zones at the same time. This is like having 6 digital music players plugged into your system without the need to take up any source inputs or even purchase any extra hardware.

An intuitive GUI interface allows you to remotely program and control any zone from a PC, and also turns a laptop on the same network with wireless LAN capabilities into a master remote control.

Optional a-live interactive keypads come with a 1" blue backlit LCD screen to provide you total zone control, including volume control w/ mute, tone controls, and full control of all PC-based music including forward, back, pause and scrolling information of artist and song name. Keypads also have IR remote control pass through capability for external source devices such as CD players, home theater audio, etc.

AKPA

Interactive
LCD Keypad



A6X6A70

70/25V Model

Audio source inputs:
Zones per unit:
Multiple server management on LAN:
Keypad ports:
Interface ports:

Source input connectors:
Source input impedance:
Source input level:
Amplifier Channels:

Power Output:

Frequency Response:
Distortion:
Signal-To-Noise Ratio:
Speaker Impedance (8 Ohm model):
Speaker Connectors:
Audio Line Outputs:
Line Output Connectors:

Power Rating:
Fuse Rating:
Compatible Audio File Formats:
Compatible Audio Playlist Formats:
Minimum System Requirements:

Operating System for Manager:
Minimum System Memory:
Minimum Hard Drive Space:
Dimensions:
Weight:

A6X6A8

8 Ohm Model

6
6
Yes
RS-422
RJ-45 for 100Mbps LAN (Ethernet)
RS-232 for system diagnostics
RCA jacks (left and right)
50k Ohm
2.2 Vrms max.
70/25V model: 1 per zone for 6 total
8 Ohm model: 2 per zone for 12 total
20W per channel (120W total for 70/25V model,
240W total for 8 Ohm model)
20 Hz to 20 kHz +0/-2.5 dB
<0.10% THD+N from 20 Hz to 20 kHz
>90 dB A-weighted, >88 dB unweighted
8 Ohms nominal, 6 Ohms minimum
Removable 4-pole coded snap
2.2Vrms (Fixed)
RCA jacks (2 per zone – L/R for 8 Ohm model,
2 Mono for 75/20V model)
100-120V AC 3A or 220-240V AC 1.25A, 50-60Hz
F3.0A H 250V USA and Canada
MP3, M4A, M4B
WPL, XML
Pentium 4 3.0+ processor for up to 4-zone digital
streaming. Pentium dual core 1.60+ processor
for up to 6-zone digital streaming
Windows XP (Service Pack 2) or Windows Vista
512MB
1GB
17" W x 17.4" L x 3.5" H
34 lbs.

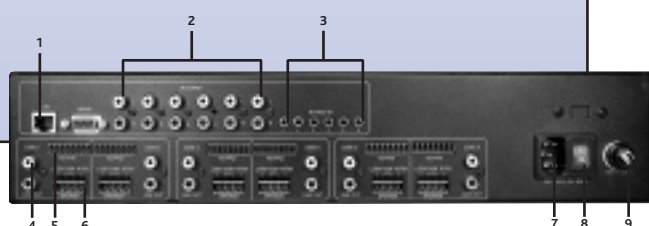
AIE

Infrared Emitter
for a-live™



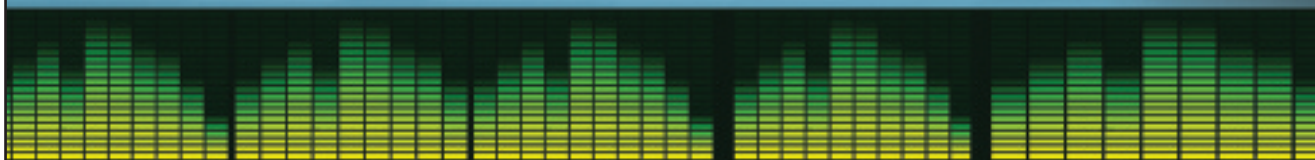
- **Live, Networked Audio Streaming Directly From Your PC or Laptop**
- **70/25V Model Allows For More Speakers To Be Run Greater Distances Than The Standard 8 Ohm Outputs**
- **Allow For Control of Up To 6 Zones Per Unit Through PC/Laptop Interface or Interactive LCD Keypads**

1. LAN connection
2. Auxiliary Inputs 1-6
3. Routed IR transmitter outputs
4. Auxiliary output, per zone
5. Keypad input, per zone
6. Speaker output, per zone
7. AC power cord
8. Master power switch
9. External fuse





Commercial Audio



Residential Audio begins on page 29

General Information

The **Speco Technologies' FACD Series** UL listed amplifiers are designed as a perfect solution for commercial applications where power, reliability, functionality and performance are essential.



P240FACD

UL Listed 240 Watt P.A. Amplifier with FM Tuner & MP3-Ready CD Player

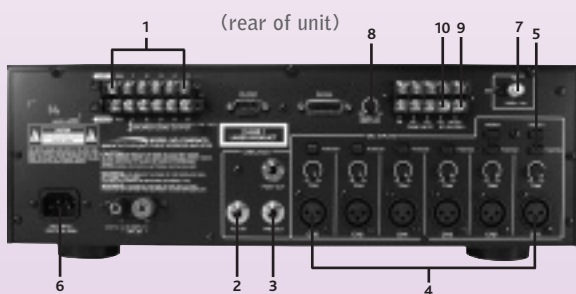
Features & Specifications

- Five 70V output zones
- FM tuner with MP3-ready CD player
- 240 Watts RMS
- AC 120V/50/60Hz
- 60Hz-15kHz
- 6 XLR microphone inputs
- 1 AUX input
- 1 Telephone input (0.1-1V 600 Ohms)
- 8 Ohm and 70V outputs
- Music-on-hold feature
- Built-in equalizer: 3 band-in inputs, 2 band master
- Built-in push-to-chime
- 5.2" H x 16.5" W x 15" D
- UL & CSA listed

• **Rack mount kit included**



Ideal for Retail, Offices, Hospitality, Gymsnasiums and more!



- | | |
|------------------------------|------------------------------------|
| 1. Zone 1~5 output terminals | 6. AC plug-in for electrical cord |
| 2. Aux. input jack | 7. Inputs for FM Radio antenna |
| 3. Aux. output jacks | 8. Music-on-hold volume adjustment |
| 4. XLR Mic connectors | 9. Music-on-hold input |
| 5. Phantom power buttons | 10. Telephone paging input |

General Information

Offering up to 240 Watts RMS, these premium amplifiers each feature an FM/AM digital tuner and an MP3-ready CD player. These models are designed to meet the needs of contractors; offering ample input connections such as 4 XLR MIC connectors, a 600 Ohms telephone paging input and an auxiliary 200mV input. These input specifications are complemented by a 70 Volt or 4, 8, 16 Ohm speaker outputs, a 'Music-On-Hold' output and four 70V or 25V zone outputs.



P60FACD

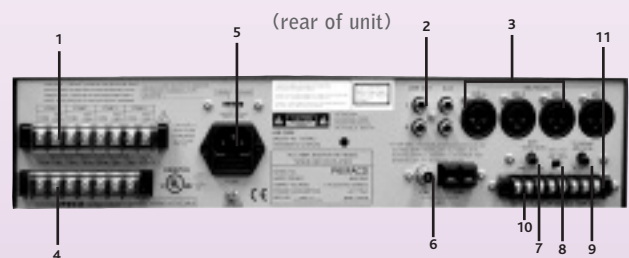
UL Listed 60 Watt P.A. Amplifier
with FM Tuner & MP3-Ready CD Player

Save rack space and money by combining
2 sources; a preamplifier and power
amplifier into one chassis!

Features & Specifications

- Four 70/25V zone outputs
- FM Tuner with 8 function CD Player Unit
- 60 Watts RMS / 90 Watts Max.
- AC 115V/50/60Hz
- 60-15kHz
- 4 MIC inputs/4 XLR connections (1mV; 250 Ohms)
- 1 AUX Input (200mV 47K)
- 1 Telephone Input (0.1-1V 600 ohms)
- 4/8/16 Ohms & 25/70 V Line Outputs
- Music-On-Hold Feature
- Separate Bass & Treble Controls
- 3.5" H x 16.9" W x 11.6" D
- UL & CSA listed

Rack mounting kit available: **PBMRK2**



1. Zone 1-4 output terminals
2. Aux output RCA jacks
3. XLR Mic connectors
4. Screw terminal outputs
5. AC plug-in for electrical cord
6. Inputs for AM & FM Radio antennas
7. Music-on-hold volume adjustment
8. Override Mic #1 switch
9. Adjust paging system volume
10. Music-on-hold input
11. Telephone paging input

Professional Series 30 Watts RMS P.A. Amplifier with 30 Preset Digital FM Tuner

Features & Specifications

- Digital 30 station preset FM/AM tuner
- Built-in telephone paging
- Voice activated priority paging
- Music-on-hold circuits
- Outputs include: 4, 8 Ohm and 25/70 Volt
- 30 Watts RMS power
- THD: less than 1.0%
- Input connections include: 2 locking Cannon type XLR connectors, one 1/4" microphone connector, one RCA aux. input
- Power: 117/220V AC for 50/60 Hz
- **Rack mounting kit included**



P30FA

General Information

The PL200M is the next generation of Speco Technologies' commercial amplifiers. This advanced unit features matrix technology, allowing you to route up to 5 separate inputs to 4 distinct zones. Now you can have the potential of playing a different source in each zone simultaneously. Assigning a source to a zone is as easy as pressing a button, and each source has its own separate gain, treble, bass and volume controls. Three of the inputs feature a unique universal plug allowing for flexibility of connecting either an XLR or a 1/4" plug into the same input.



Features

- Simultaneous playback of up to 5 sources into up to 4 zones
- Telephone paging function and monitor output for a limited music-on-hold function
- Microphone 1 priority with VOX mute function
- Intelligent cooling fan
- RoHS Compliant
- Separate controls (gain, bass, treble, volume) and mute for each source
- Separate volume control & LED level indication for each zone
- 19" rack mount design with built-in handles (3U)

PL200M

Four Zone 160 Watt Commercial Amplifier

Specifications

- 3 XLR / 1/4" combination inputs with phantom, mic or line level selection switch / 2 RCA inputs
- 4 sets of 4Ω / 8Ω / 25/70V outputs
- 40W RMS power output per zone for 160W total
- 60Hz – 17KHz +/- 3Db frequency response
- 19" W x 12.2" L x 5.2" H
- 33.3 lbs.



Ideal for Offices, Hospitality, Hotels and more



(rear of unit)

General Information

Speco Technologies has answered our customers' requests for a high-wattage, premium amplifier to handle their most demanding large-scale applications.

Our **Platinum 260** model (PL260A) delivers 260 watts of RMS power while featuring seven 70 or 25 Volt paging zones that can be independently controlled. A 24 Volt battery backup input terminal delivers reassurance in the event of a power failure, safeguarding that internal communications can still be maintained. Five XLR microphone connectors with individual phantom power switches, and three auxiliary jacks deliver ample inputs that will cover most any end user needs.

Additional features of music-on-hold, a 600 Ohms telephone paging input, pre-amp input, booster output, 4/8/16 Ohm speaker outputs, an auxiliary output and separate bass and treble controls.

**Ideal for
Schools, Offices,
Manufacturing
and more!**



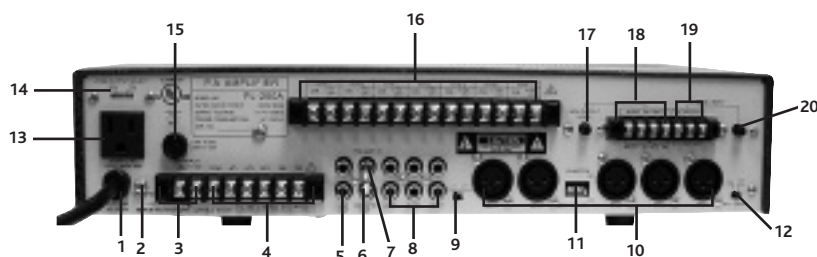
PL260A Seven Zone 260 Watt Commercial Amplifier

Features & Specifications

- 260 Watts RMS
- Seven 70 or 25 Volt Zone Outputs with 70/25 Selector Switch
- 24 Volt Input for emergency back up power
- 5 XLR MIC connector inputs with Phantom Power Switches
- 3 Auxiliary Inputs
- Pre Amp Input/Booster Output
- Additional Auxiliary Output
- 4/8/16 Ohms Output Zone
- Music-on-Hold Feature
- 1 Telephone Paging Input (0.1-1V 600 Ohms)
- AC 117V/60Hz
- Seven Zone On/Off Selectors on Face Plate
- Separate Bass and Treble Controls
- 3.5" H x 16.9" W x 11.6" D

Rack mount available: **PBMRK2**

(rear of unit)



- | | |
|--|--|
| 1. AC power cord | 11. Phantom Power on/off switches |
| 2. Ground | 12. MIC-1 VOX on/off switch |
| 3. 24 Volt DC input terminals for battery backup | 13. AC accessory outlet |
| 4. Speaker output terminals | 14. Zone output 25V/70V selector switch |
| 5. AUX output RCA jacks | 15. AC fuse holder |
| 6. Booster amp out | 16. Zone 1~7 output terminals |
| 7. Pre-amp/EQ/mix input | 17. Music-On-Hold output level control |
| 8. 3 Auxiliary input RCA jacks | 18. Music-On-Hold output terminals |
| 9. AUX1/MIC5 input selector switch | 19. TEL./PAGING input terminals (Balanced) |
| 10. 5 XLR MIC input connectors | 20. TEL./PAGING input level control |

General Information

Our UL Listed Contractor Series amplifiers are the ideal amplifiers for everyday use. They can stand on their own as part of a smaller installation, or be incorporated into a much larger job. With RMS power ranging from 30W to 120W, microphone and source mixing ability, telephone paging interface and music-on-hold capability, there is almost no job that these amplifiers cannot be a part of.



60 watts **PMM60A** 120 watts **PMM120A**

60 or 120 Watts RMS Public Address Power Mixer Amplifiers



Features & Specifications

- 60 Watt RMS or 120 Watt RMS
- AC 120V, 50/60Hz
- 50-15kHz
- 6 MIC Inputs/4 XLR connections (1.0mV/600 Ohms)
- 3 Aux Inputs (200mV/50k Ohms)
- 1 Telephone (100mV/600 Ohms)

- 4/8/16 Ohms & 25/70V Line Outputs
- Music-on-Hold Feature
- Treble/Bass Control
- Master Volume Control
- 16.9" x 3.5" x 11.8"
- UL & CSA listed

Rack mounting kit available: **PBMRK2**



The ideal amplifier for everyday use!

30 Watts RMS Public Address Amplifier

PBM30

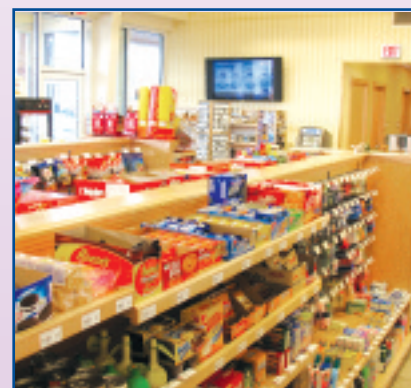


Features & Specifications

- Two MIC inputs (terminal strip)
- Aux input
- Front panel level controls
- Auto mute function
- Bass and treble tone controls
- Outputs 70/25V and 4/8/16 Ohms
- Auto summing stereo AUX input

- Music-on-hold output with separate level control (600 Ohms line & 1 Watt 8 Ohms)
- 600 Ohms tel. line input w/ level control
- Manual muting contacts
- Accessory AC outlet
- UL & CSA listed

Rack mounting kit available: **PBMRK1**



Item	MIC Inputs	XLR MIC Inputs	AUX Inputs	Telephone Paging	70/25 Volt	Music-on-Hold	Aux. Output	Bass/Treble Controls	Measurements
PBM30	2		1	✓	✓	✓		✓	10.75" W x 3.5" H x 9.5" D
PMM60A	6	4	3	✓	✓	✓	1	✓	16.9" W x 3.5" H x 11.8" D
PMM120A	6	4	3	✓	✓	✓	1	✓	16.9" W x 3.5" H x 11.8" D

Professional Series 40 Watt Max. P.A. Amplifier

- Front-connecting microphone and auxiliary inputs
- Separate bass and treble controls
- Separate volume control for each input
- Compact design with lighted on/off power switch

- 2 Microphone, 1 Auxiliary inputs
- 8Ω, 25V and 70V outputs
- 40W Max. power
- 25Hz - 18KHz +/- 3dB frequency response
- 8.7" L x 7.3" W x 3.3" H
- 9 lbs.



P40A

Ideal for schools and other smaller applications

Digital FM/AM Tuner with 36 Presets and 1 Watt Output

- 36 station presets
- Stereo, line level out
- Adjustable mono output up to 1 Watt for music-on-hold
- Signal strength indicator
- Rack mount kit included
- AM/FM antenna included
- 9" L x 16.5" W x 2" H



PFA

1 to 5 Zone Selectable Paging Adapter

- 25V / 70V compatible
- 5 Speaker Selectors
- All-zone page feature
- 9" L x 16.5" W x 2" H
- Rack mounting kit Included

PZ5



Mobile Amplifier

20 Watt Talk-Back Mobile Amplifier

- Power Output: 20 Watts
- Output Impedance: 4 or 8 Ohms
- Frequency Response: 50Hz-20kHz
- Auxiliary Audio Jack Input: 200mV/50K Ohms
- MIC Input: 2mV/5K Ohms
- Power Source: 11V to 16V DC NEG GND
- Dimensions: 5 1/8" W x 1 1/4" H x 4 1/2" D
- Weight: 2 lbs.
- Complete with Mounting Brackets

PAT20TB



Megaphone

Deluxe Megaphone With Siren

- Wattage 16 W Max
- Effective 800 feet
- Powerful solid state megaphone
- Built-in switch selectable electronic alarm siren
- Pistol grip
- Press to talk switch
- Volume control
- Shoulder strap
- Durable weatherproof construction
- Operates on 8 "C" cells (not supplied)
- 9.1" Bell Diameter x 14.25" Long
- 3 lbs., 4 oz. w/o batteries



ER370

Amplifier Reference Chart

Model #	RMS Watts	UL Listed	Total Possible MIC/Aux Inputs	Total Possible Mic	Mic Strip Terminals	XLR Connectors	Mic/Aux RCA Jacks Pairs	Megaphone Paging (40K Ohms)	Power 25V	4/16 Ohms	Music On Hold Output	Aux. RCA Outputs	Speaker Zones	FM/AM Tuner	Muting Over Drive	CD Player	Separate Front Bass & Treble Controls	Separate Front MIC Volume Controls	Master Volume
PM30	30	✓	3	2	2		1	✓	✓	✓	✓	1	1	✓	✓		✓	✓	
P30FA *#	30	✓	3	2		2	1	✓	✓	✓	✓	1	1	✓	✓		✓	✓	✓
PADA	30		3	2					✓	✓	✓	1			✓		✓	✓	✓
PE6FACD	60	✓	6	4		4	1	✓	✓	✓	✓	1	4	✓	✓	✓	✓	✓	✓
PM650A	60	✓	6	6	2	3	3	✓	✓	✓	✓	1	1				✓	✓	✓
PM1120A	120	✓	6	6	2	4	3	✓	✓	✓	✓	1	1		✓		✓	✓	✓
PL200M	160		6	3		3	2	✓	✓	✓	✓		4				✓	✓	✓
P240FACD	240	✓	7	6		6		✓	70V	8Ω	✓		6	FM	✓	✓	✓	✓	✓
PL260A	260	✓	7	6		6	3	✓	✓	✓	✓		7				✓	✓	✓
PAU20TB ~ #1DC AMP1	20		2	1			1		✓			1							✓

* 8 Ohm- Mobile PA Amplifiers

1/4" MIC Plugs in lieu of Strip Terminal

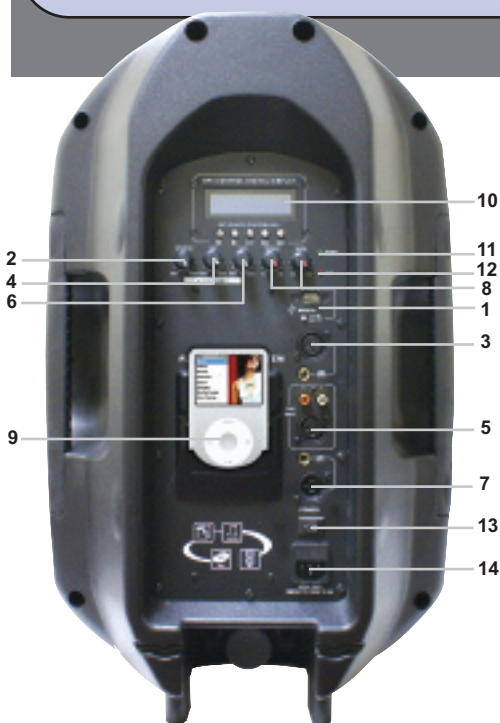
Specifications are subject to change without notice

12" 2-Way Portable Amplified Speaker with iPod® Dock & MP3 Player

Speco Technologies' new PAP160A is a high-powered, portable, self-amplified sound system and is the ideal solution for classrooms, training rooms, auditoriums, houses of worship, traveling presenters and much more. The unit contains a 12" woofer and 1.4" tweeter with a built-in 380W amplifier, iPod® Dock and USB MP3 player.

- Multi-function USB MP3 player
- iPod® Dock
(Note: Dock is designed for older-model iPod®s. It will play music from the iPhone® and iTouch® but it will not charge those units.)
- RCA and XLR Auxiliary line-in
- Auxiliary line-out
- XLR and 1/4" microphone input
- Bass and Treble controls

NEW



(rear of unit - iPod® not included)

PAP160A

- **Woofer:** 12" Polypropylene
- **Tweeter:** 1.4" Titanium
- **Frequency Response:** 40Hz~17KHz
- **Sensitivity:** 96±2dB (1W/1m)
- **RMS Power:** 160W
- **Max Power:** 380W
- **Voltage:** 110V AC 50~60Hz
- **Dimensions:** 17.5" W x 14" D x 25.2" H
- **Weight:** 35 lbs. with carrying handle



(close-up of MP3 Player Controls)



(easy carrying handle)

1. USB Connector & power: Connect Flash drive with MP3 files for play via built-in MP3 player (#10). MP3/iPod® input can also be turned on/off
2. MP3/iPod® level: Controls the volume level of the MP3 (#10) or iPod®
3. MIC Input: Connect a dynamic microphone through either 3-pin XLR connector or 1/4" jack
4. MIC level: Control volume of microphone connected via MIC input (#3)
5. Line Input: Connect device with line level output such as CD player, tuner or mixer through either RCA balanced input or 3-pin XLR.
6. Line Input Level: Control volume level of the Line input (#5)
7. Output: Send output signal to another amplifier or to another PAP160A
8. Bass & Treble: Control the low & high level frequency tone levels. The range is selectable between -12dB to +12 dB
9. iPod® Dock: Designed for the classic style iPod® (*not included*). Dock will play output from iPhone® or iTouch® but will not charge those units.
10. MP3 Player & Controls: Display information for any MP3 files connected via the USB input (#1).

There are 5 control buttons (from left to right):

- a. Play/Pause
 - b. Stop
 - c. Play options: Random (default): Play the songs on the drive in a random order once through, Repeat One: Repeat the current song & Repeat All: Continue to randomly play all songs.
 - d. Reverse: One quick press & release will go to the previous song Holding the button down will rewind through the current song
 - e. Forward: One quick press & release will go to the next song Holding the button down will forward through the current song
- 11) Power LED: Lights when device is ON.
 - 12) Clipping LED: Lights when applied input signal reaches distortion. Reduce input level in order to eliminate distortion.
 - 13) Main Power Supply: Power cable connection
 - 14) Power Switch: Turns unit on/off



Speco Technologies' Multi-Application (MA) Series was designed to make the contractor's work as easy and time-efficient as possible.

Our all-in-one unit comes pre-assembled with back can and mounted transformer. It features a quick-flip 70 or 25 Volt selector switch and an easy select transformer wattage dial. The choice of 8 or 9 individual wattage tap settings covers a complete range of uses.

This flame-retardant ABS unit also comes with insulated wires, has an attached metal safety loop and easy mount tabs for securing the unit.

The MA Series is the ideal, all purpose value speaker covering a wide range of commercial sound applications. The furnished 8 Ohm tap selector can be kept on-hand for unexpected installation needs.



ABS Flame Retardant Back Can



70V or 25V Selector Switch



Easy Select Transformer Dial



Safety Loop



Ported Bass

Sold individually



Model Number

SP5MAT

SP6MAT

Woofer

5.25" Polypropylene with Rubber Surround

6.5" Polypropylene with Rubber Surround

Tweeter

1" Mylar Tweeter

1" Mylar Tweeter

Frequency

57Hz –20kHz

34Hz –20kHz

Wattage

30 Watt RMS/ 60 Watt Max.

40 Watt RMS/ 80 Watt Max.

Sensitivity

87 dB 1w/1m

88 dB 1w/1m

Impedance

8 Ohms

8 Ohms

Weight

4.5 lbs.

5.5 lbs.

Transformer

70/25 Volt selector switch

70/25 Volt selector switch

Transformer Settings

30.0, 15.0, 7.5, 5.0, 2.5, 1.0, .50, .25, & 8 Ohms

40.0, 30.0, 15.0, 7.5, 5.0, 2.5, 1.0, .50, .25, & 8 Ohms

Dimensions

9.5" Dia. x 6" Depth

11" Dia. x 7.5" Depth

Mounting Dimensions

8 3/8"

9 7/8"

Mounting Brackets Available



BRC6F

(brackets sold in pairs)



BRC8F

(brackets sold in pairs)



Our Nexus Contractor Speakers Commercial Line utilizes premium quality components to provide a network of sound and paging for even the most demanding commercial environments.

The high-end NXC Series features heavy-duty, industrial metal back cans that provide component protection and safety while enhancing the speakers' full-range bass sound. Removable "Quick-Snap" connection terminals provide easy access and optimal angles for connecting speaker wire. A wattage selector dial simplifies transformer settings. Mounted security loops allow for a support cable run and ceiling support brackets are included.

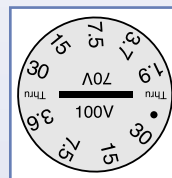
Most importantly, these speakers have met or passed the strict UL 1480 requirements for fire safety.



Fire retardant metal back can



Quick-snap terminal connects



Transformer dial

SP5NXCTUL **NEW**

5.25" Metal Back Can 70V Speaker

5.25" Wool/Paper Woofer with Rubber Surround

¾" Silk Dome Tweeter

Frequency Response: 70Hz to 20kHz

Sensitivity: 88db 1w/1m

Impedance: 8 Ohms

Max. power handling: 80W

70V Transformer Switch

Transformer settings: 10W, 5W, 2.5W, 1.25W & 0.625W

Dimensions: 9.25" Diameter x 7.25" Depth

Cut Out Dimensions: 7.8" Diameter

Quick-Snap terminal connections

UL 1480 Rated

Metal Safety Loop for Securing

Mounting Brackets Included

Sold in Pairs

SP6NXCTUL

6.5" Metal Back Can 70V Speaker

6.5" Polypropylene Woofer with Rubber Surround

¾" Silk Dome Tweeter

Frequency Response: 60Hz to 20kHz

Sensitivity: 87db 1w/1m

Impedance: 8 Ohms

Max power handling: 80W

70V Transformer Switch

Transformer settings: 30W, 15W, 7.5W, 3.7W & 1.9W

Dimensions: 10.25" Diameter x 7.75" Depth

Cut Out Dimensions: 8.75"

Quick-Snap terminal connections

UL 1480 Rated

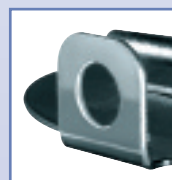
Metal Safety Loop for Securing

Mounting Brackets Included

Sold in Pairs



Mounting brackets included



Safety loop



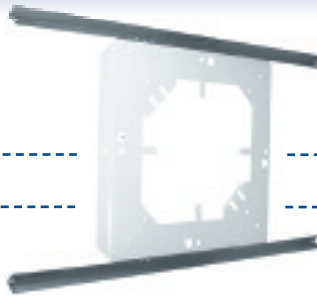
Ported bass

Classic 70/25 Volt Economical Speaker Solutions

3



2



1



Speaker / Grille Combo - Also Available with Volume Control

1



- 8", 5 Watt dual 70/25V transformer (taps at 5, 2 1/2, 1, 1/2 & 1/4)
- 5oz. magnet
- With white metal grille
- All mounted & wired
- Frequency response: 85Hz-15kHz

WITH VOLUME CONTROL **G86TG**
G86TCG

Speaker Ceiling Support for G86TG / G86TCG

2



- T-Bar bridge for ceiling support of 8" speakers with grilles, top hats, etc.
- Heavy gauge steel construction
- 23 5/8" x 14"
- Sold individually

TS8

Stackable Top Hat

3



- Perforated mounting strap for 8" speakers
- Heavy-gauge steel construction with undercoating that eliminates any mechanical or acoustical resonance caused by vibration
- Rust preventive finish
- 4 combination knockouts 1/2"-3/4"
- 4 "J" clips for mounting of baffles
- Can be used for a back box in ceilings or walls
- Sold individually

STH8

Modern 70/25 Volt Economical Speaker Solutions

Speaker / Grille Combo - Also Available with Volume Control



- 8", 5 Watt dual 70/25V transformer (taps at 5, 2 1/2, 1, 1/2 & 1/4)
- 5oz. magnet
- With white metal grille
- All mounted & wired
- Frequency response: 90Hz-20kHz
- Also available in 6"



Easy Mounting Tabs



NEW

8" SPEAKER
6" SPEAKER

SPG86T
SPG66T

8" SPEAKER WITH VOLUME CONTROL **SPG86TC**
6" SPEAKER WITH VOLUME CONTROL **SPG66TC**

Speaker Ceiling Support for SPG86T / SPG86TC



- Metal in-ceiling brackets for 8" speakers
- Outer Dimensions: 16.75" with 2 ft. support rails
- Cut-Out Dimensions: 9.5"
- Sold in pairs

BRC8

Speaker Ceiling Support for SPG66T / SPG66TC



- Metal in-ceiling brackets for 6.5" speakers
- Outer Dimensions: 16.75" with 2 ft. support rails
- Cut-Out Dimensions: 7.75"
- Sold in pairs

BRC6

8" Wall Baffles with Transformer & Level Control / With Speaker & Transformer / Empty

- Deluxe sloped front walnut grained vinyl clad wall baffle
- Solid wood construction
- 8" 6 oz. dual cone speaker
- Black cloth grille
- 70V line transformer, level control & built-in terminal strip for wattage selection up to 10W

WB86D

Wall Baffle with 70V Transformer & Volume Control



Sold Individually. All combos also available with 25V transformer, please specify. 10" H x 10" W - Top 5", Bottom 3" D



The SPCT8T ceiling tile speaker is the perfect solution for commercial sound applications that require speed of installation, aesthetics and superior performance.

Installation is quick and easy requiring only the connecting of speaker wire to the unit's pushbutton terminals.

A smooth vent facade design blends seamlessly within a commercial drop-ceiling environment and provides an ample gateway for wide sound dispersion. Design is matched with high performance via a flat frequency curve and wide response range.

SPCT8T 8" 70/25V Ceiling Tile Speaker

- 8" Polypropylene woofer with rubber surround
- 3/4" Mylar dome tweeter
- Frequency response: 50Hz-20kHz
- 30 Watts RMS Power / 60 Watts Max.
- Sensitivity: 90 +/- 3 dB
- 8 Ohms Impedance
- 70/25 Volt selector switch
- Transformer Settings: 20, 10, 5, 2.5, 1.25 and 8 Ohms
- 23 3/4" W x 23 3/4" H x 6" D
- 7.1 lbs.
- 2 ft. drop-ceiling crossbar rail included



Transformer Settings
On Rear of Speaker

Fits directly into a 2' x 2' ceiling tile - no cutting necessary!



Pendant Speaker

Speco Technologies new pendant speaker skillfully combines style, convenience and value into one package. The SP30PT is perfect for situations where background music or paging is needed but ceiling mounting is prohibitive.

SP30PT 70/25V/8 Ohm Hanging Pendant Speaker

- 5" Polypropylene Woofer with Rubber Surround
- 1/2" Mylar Tweeter
- Frequency Range: 95Hz - 20KHz
- 30 Watts RMS Power / 60 Watts max.
- Sensitivity: 92±2dB
- Impedance: 8 Ohms
- 70/25 Volt Selector Switch Transformer
- Transformer Settings: 30W, 15W, 7.5W, 5W, 2.5W, 1W, 0.5W, 0.25W & 8 Ohm
- Dimensions: 8.25" W x 5.5" H
- 5 lbs.
- Includes hanging apparatus
(may differ from one shown)



Also available in black: **SP30PTB**

NEW

Elite Series

4"



WITHOUT TRANSFORMER:
SP4AWEW (White)
SP4AWE (Black)
SOLD IN PAIRS

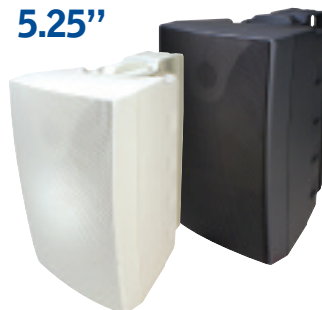
WITH TRANSFORMER:
SP4AWETW (White)
SP4AWET (Black)
SOLD INDIVIDUALLY

Description	4" Indoor/Outdoor Speakers with & without Transformer
Woofer	4" Mica/Polypropylene Cone
Tweeter	.75" Silk Dome Tweeter
Frequency	75Hz-20kHz
Sensitivity	84 dB 1 w/1m
Wattage	25 Watts RMS / 40 Watts Max.
Dimensions	9.5" H x 6" L x 6.5" D
Weight	SP4AWE/SP4AWEW: 4.85 lbs. SP4AWET/SP4AWETW: 5.5 lbs.
Impedance	8 Ohm
Transformer	70/25V (20W, 15W, 10W & 5W)

Extreme Series

shown w/ grille

5.25"



SP5AWXTW (White)
SP5AWXT (Black)
SOLD INDIVIDUALLY

5.25" Indoor/Outdoor Speakers with Transformer
 5.25" Polypropylene with Rubber Surround
 .75" Silk Dome Tweeter
 75Hz-20kHz
 88 dB 1 w/1m
 40 Watts RMS / 80 Watts Max.
 9" H x 6" W x 6 1/4" D
 5.3 lbs.
 8 Ohm
 70V (20W, 12W, 7.5W, 4W, 2W & 8 Ohm)

6.5"



SP6AWXTW (White)
SP6AWXT (Black)
SOLD INDIVIDUALLY

6.5" Indoor/Outdoor Speakers with Transformer
 6.5" Polypropylene with Rubber Surround
 1" Silk Dome Tweeter
 60Hz-20kHz
 90dB 1w/1m
 50 Watts RMS / 100 Watts Max.
 11" H x 7" W X 6 3/4" D
 6.6 lbs.
 8 Ohm
 70V (25W, 15W, 10W, 5W, 2.5W & 8 Ohm)

Our All-Weather Outdoor Speakers Offer Great Aesthetics and Superb Sound At a Competitive Price Point.

Weather Resistant Indoor/Outdoor 3-Way Polypropylene Cone Speaker System with Dual Built-In Line Transformer

- All speakers are polypropylene
- 70/25V line or 8 Ohms adjustable rotary switch
- 15W/330 ohms, 7.5W/660 Ohms, 4W/1250 Ohms, 2W/2500 Ohms, 1W/5000 Ohms
- Voice coil - 50W, 8 Ohms
- Each speaker contains: 4" 10 oz. air suspension woofer, P.P. 2" midrange, 1" dome tweeter
- Frequency response: 55-20 kHz
- Die cast enclosure, complete with mounting bracket, wire & hardware
- 4.375" L x 4.5" W x 7.25" H



SOLD INDIVIDUALLY

Black **DMS3TS**
 White **DMS3TSW**

10 Watt Amplified Deluxe Professional Communications Extension Speaker

- Swivel bracket for all angles
- ABS plastic enclosure
- Voltage: 12V DC Input
- Impedance 4-8 Ohms
- 10W amplified power
- 4" with soft padded grille
- Complete with 10ft. cord & standard 3.5mm mini-plug
- 2.5" L x 5.5" W x 4.5" H



AES4

Deluxe Professional Communications Extension Speaker

- Swivel bracket for all angles
- ABS plastic enclosure
- Soft padded grille
- Complete with 10ft. cord with standard 3.5mm mini-plug
- Controlled speech frequency response (700 - 2 kHz) automatically limits background noise
- 4 - 8 Ohms, 10W speaker
- Size 4.5" H x 5.5" W x 2.5" D



CBS4

All-Weather Professional Communications Extension Speaker



- 5 Watts
- 4" polypropylene speaker
- Max. power: 5W
- Impedance: 8 Ohms
- Weatherproof professional marine communications extension speaker with polypropylene cone
- Black ABS plastic case with stainless steel hardware and 180° deluxe adjustable mounting bracket
- Prewired 10ft. cable and 3.5mm miniature plug included



CBS240

Mini Speakers

Available in bulk only - 50 pieces per pack standard

MODEL NO.	DIMENSIONS	IMP. OHMS	RESONANT FREQ. (Hz)	FREQUENCY RANGE (Hz)	SENSIT dB	POWER NOM WATTS	ALINCO MAG WHT OZ.
U260SX	2" SQUARE	8	375-485	FO-4,500	92.0	0.2	0.33
U265SX	2" SQUARE	8	275-390	FO-4,500	92.0	0.3	0.4

Our professional, UHF 700 frequency-selectable single channel receiver, handheld and lapel microphone transmitters allow the user to select and match desired frequencies on each unit; thus eliminating the need to maintain high inventory levels of similar units with locked frequencies; providing clear, interference-free channels of communication for roaming distances in excess of 200 feet.

- Up to 700 selectable pre-programmed frequencies make it easy to set up multiple system configurations and avoid interference
- Auto-scan function can locate interference-free channels easily
- Diversity technology ensures quality reception
- Integrated charging function saves money and the environment
- Constructed from durable plastic with a ½ rack design
- Squelch adjustment
- Balanced XLR connector and unbalanced ¼" jack audio output
- FCC, CE, RoHS compliant



NEW

UHF Professional Frequency-Selectable Single Channel Diversity PLL Receiver

- Carrier Frequency Range: UHF band 540~570MHz
- Oscillator: PLL synthesized
- Modulation: FM
- Frequency Stability: $\pm 0.005\%$
- S/N ratio: $> 94\text{dB}$, at 48KHz deviation and 60dBmV antenna input
- Maximum Deviation: $\pm 48\text{KHz}$
- Image and Spurious Rejection: 80 dB minimum
- Receiving Sensitivity: 6 dB μ V.
- Selectivity: $> 50\text{dB}$
- AF Response: 80Hz to 12KHz ($\pm 3\text{dB}$)
- T.H.D.: $< 1\%$ (at 1KHz)
- IF Frequency: 1st: 56MHz 2nd: 10.7MHz
- Dynamic Range: $> 96\text{dB}$
- Tone Signal: 32.768KHz
- Audio Output: Balanced and unbalanced audio outputs
- Power Supply: 12V DC
- Current Consumption: Single Channel: About 150mA

MUHF100



UHF Professional Frequency-Selectable Single Channel Handheld or Lapel Microphone

- Carrier Frequency Range: UHF band 540~570MHz
- RF Power Output: 10mW (max.)
- Oscillator: PLL synthesized
- Frequency Stability: $\pm 0.005\%$
- Maximum Deviation: $\pm 48\text{KHz}$
- Spurious Emission: 60dB below carrier frequency
- T.H.D.: $< 1\%$ (at 1KHz)
- Microphone Cartridge: (Handheld) uni-directional dynamic or uni-directional electret condenser unit. (Lavalier) uni-directional electret condenser unit
- Operating voltage: DC1.5V x 2 AA size dry or rechargeable batteries
- Current consumption: 120mA (MAX.)

MUHFHH

Handheld Mic

MUHFLL

Lapel Mic



UHF 128 Frequency-Selectable PLL Microphone Line

Professional Lightweight Condenser Headset Microphone

For use with **MUHFLL** shown above

- Cardoid, electret condenser microphone
- Unidirectional
- Sensitivity: $-67 \pm 4\text{dB}$
- Impedance: 600 Ohms
- Frequency range: 100-16,000Hz
- Max. operation voltage: 10V DC
- Standard operation voltage: 1.5V DC
- Current consumption: Max. 0.5mA
- Sensitivity reduction: within -3dB at 1V
- SN Ratio: $> 40\text{dB}$
- Weight: 2 oz.
- Cord Length: 3 ft.
- Wind Screen included

MWHSCL



Handheld Dynamic Microphone

- Impedance: 500 Ohms
- Sensitivity: -54dB +/-3dB
- Frequency Response: 50Hz~13kHz
- Connector: XLR
- Mic stand adapter included
- 15' cable included



MCHH100A

Adjustable Gooseneck Tabletop Microphone

- Momentary switch for priority paging & lock down switch for continuous use
- 6" gooseneck extension and 5' cord
- Cannon 3 pin XLR male connector
- Impedance: low-600 Ohms high-50 kHz
- Sensitivity: High-53dB +/- 3dB Low 71 dB +/- 3 dB

MHL5S



Universal Mic Stand Adapter

- Fits most hand-held microphones
- Clamp-on style for wider hand-held microphones



MSA1

Desktop Conference & Paging Microphone

- Capsule Type: Condenser
- Impedance (@1kHz): 200 Ohms
- Sensitivity: -42dB +/- 3dB
- Pattern: Ultra-Cardioid
- Frequency Response: 50Hz~16kHz
- Requires 9V batteries(not included)



MCDT300A

Push-To-Talk Handheld Microphone

For CB & professional communications

- 500 Ohms impedance
- 1/4" unbalanced (TS) phono plug



DM520P

Dynamic Gooseneck Microphone with Push-To-Talk Switch

- Uni-directional
- 16 1/4" gooseneck
- 500 Ohms impedance
- Mounting base



MGS1

5" Mic Desk Stand with Cast Iron Base

- 5" tall
- Cast iron base



MSD5

10ft., 20ft. High Performance Mic Cable

- Low impedance
- XLR (Cannon) connectors
- Lead/Cadmium-free insulation, exceeds all government standards
- Lifetime warranty



10ft. **MCA10**
20ft. **MCA20**

Dual Impedance Dynamic Handheld Microphone

- Dual Impedance: 20K Ohms (High) / 500 Ohms (Low)
- Sensitivity: -54dB +/-3dB
- Frequency Response: 50Hz~13kHz
- 1/4" connector
- Mic stand adapter included
- 15' cable included



MCHH150

Round Base Mic Stand

- 2 Sections
- 5' Max.
- Cast iron base with chrome-plated steel tube



MSR5

NEW

3 Channel XLR Microphone Mixer

- 3 XLR inputs
- 1 Balanced XLR output
- THD + Noise: 0.02%
- Max Output Level: +14dB
- Max Input Level: -14dB
- Clipping Headroom: 4dB
- Max Gain: +60dB
- Low Cut: -3dB@100Hz
- Current Draw :20mA
- Phantom Power: 18V DC (2 9V batteries not included)



MMB3XLR

48V DC Phantom Power Supply For Condenser Microphones

- Male XLR mic output connector
- Female XLR mic input connector
- 110/0V 60/50Hz
- 5ft. AC power cord included

MCPP100



Pre-Amplified Line Level Mic

- Add-on mini-microphone for all systems
- High sensitivity microphone with 1.5 ft. power/audio cable
- Easy to install and ideal for all security surveillance voice recording applications
- Line level output
- 12V DC power supply included



CAMMIC



CAMMIC



UTPAUDIO
(shown below)

CAT5 Cable 1.8km



UTPAUDIO
(shown below)

Audio CAT5 Extender and Ground Loop Device

- Gold-plated RCA female to RJ45
- Used in pairs via one CAT5 UTP cable to send audio signal of up to 1 mile
- 20Hz to 20kHz bandwidth
- Available for 75-120 Ohm cable
- High performance to eliminate audio ground loop problem
- No power required
- Sold in Pairs



UTPAUDIO

70V Speaker Line Transformer

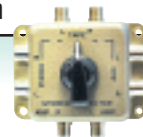
- For Hi-Fi applications
- Taps: 20, 15, 10, 5
- 70V, 20W
- Sold individually



T7020

3 Position Stereo Selector Switch

- Three positions allow 3 stereo source inputs into 1 stereo source
- Sold individually



SSS1

5 Watt Line Transformer with Color-Coded Leads

- Taps: .25, .50, 1.0, 2.5, 5.0
- Sold individually



T70255

Matching Telephone Line Input Transformer

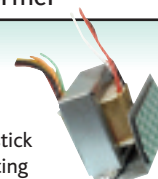
- Input matching transformer to connect telephone systems to aux. input of P.A. amplifiers for telephone paging
- Allows a music-on-hold system to a telephone system when connected to a 25V line output of a P.A. amplifier or tuner
- Impedance: 500/600 Ohms (line)
- Sold individually



TLT1

70 Volt - 20 Watt Line Transformer

- Multiple wattage taps: 20W, 15W, 10W & 5W
- EZ mount peel & stick to connect to existing 8 Ohm speakers
- Sold individually



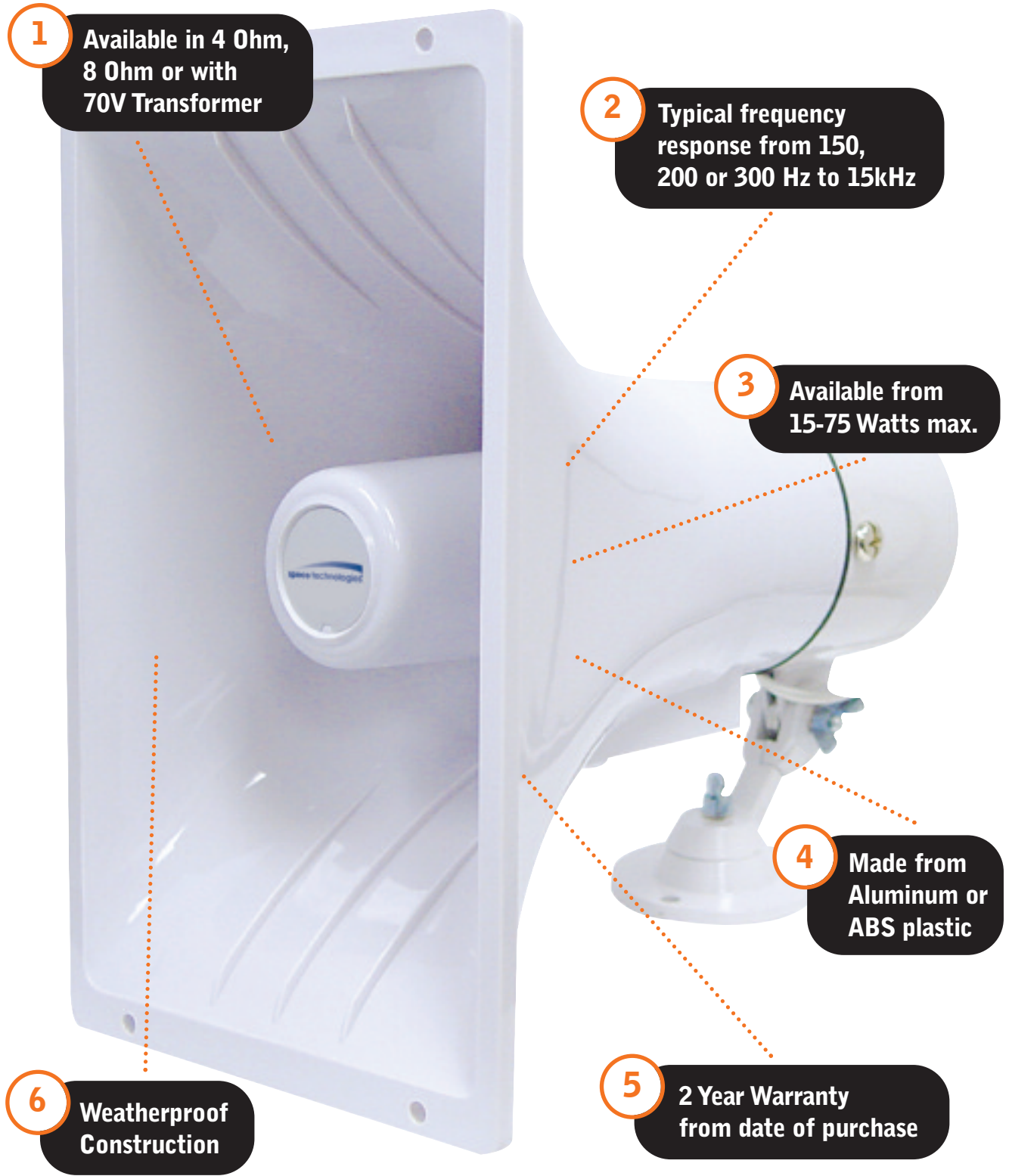
T20

25 & 70 Volt Line Transformers

- Multiple taps: 10, 5, 2.5, 1.25, .625
- Sold individually



25 V Line **T2510**
70 V Line **T7010**



NOTE: SPC40RT shown, but features are indicative of entire line

Weatherproof 5" White ABS P.A. Speaker with Metal Base

Frequency Response: 300-15 kHz
Power Rating: 15W max.
Sensitivity: 105dB/1W/1M
Impedance: 8 Ohms
Size: 5" Dia. x 5" L

SPC6P



Weatherproof 5" Aluminum P.A. Speaker

Frequency Response: 300-15 kHz
Power Rating: 5W max.
Sensitivity: 105dB/1W/1M
Impedance: 8 Ohms
Size: 5" Dia. x 5" L

SPC8



Weatherproof 5" White ABS P.A. Speaker

Stainless Steel Hardware & ABS Plastic Base with 10 Ft. Cord & 3.5mm Plug

Frequency Response: 300-15 kHz
Power Rating: 15W max.
Sensitivity: 105dB/1W/1M
Impedance: 8 Ohms
Size: 5" Dia. x 5" L

SPC5P



Weatherproof 6" Aluminum P.A. Speaker

Frequency Response: 250-15 kHz
Power Rating: 10W nom./15W max.
Sensitivity: 105dB/1W/1M
Impedance: 8 Ohms
Size: 6" Dia. x 6" L

8 Ohms SPC10
4 Ohms SPC104



Weatherproof 8" Aluminum P.A. Speaker

Frequency Response: 200-15 kHz
Power Rating: 15W nom./25W max.
Sensitivity: 110dB/1W/1M
Impedance: 8 Ohms
Size: 8" Dia. x 8" L

SPC15



Weatherproof 5" x 8" Aluminum P.A. Speaker

Frequency Response: 200-15 kHz
Power Rating: 15W nom./25W max.
Sensitivity: 110dB/1W/1M
Impedance: 8 Ohms
Size: 8" L x 8" W x 5" H

SPC15R



Weatherproof White ABS Marine P.A. Speakers

Stainless Steel Hardware & ABS Plastic Base Bracket Pivots 90°

Frequency Response: 200-15 kHz
Sensitivity: 110dB/1W/1M (SPC12RP)
105dB/1W/1M (SPC15RP)
Size: 8" L x 6" W x 4" H (SPC12RP)
9" L x 8" W x 5" H (SPC15RP)

30W Max. 8 Ohms SPC12RP
30W Max. 8 Ohms SPC15RP
30W Max. 4 Ohms SPC15RP4



Weatherproof 6.5" x 11" White ABS P.A. Speaker

Frequency Response: 200-15 kHz
Power Rating: 40W max.
Sensitivity: 120dB/1W/1M
Impedance: 8 Ohms
Size: 9" L x 6.5" W x 11" H

8 Ohms SPC40RP
4 Ohms SPC40RP4



Weatherproof 15" Aluminum P.A. Speaker

Frequency Response: 200-15 kHz
Power Rating: 40W nom./75W max.
Sensitivity: 120dB/1W/1M
Impedance: 8 Ohms
Size: 15" Dia. x 13" L

SPC30



Weatherproof 8.5" 70/25 Volt Line Transformer P.A. Speaker

Frequency Response: 250-15 kHz
Power Rating: 15W nom./30W max.
Taps 25V line: 15W/42 Ohms, 10W/63 Ohms, 3.7W/170 Ohms
Taps 70V line: 10W/500 Ohms, 5W/1k-Ohms, 3W/1.3k Ohms, 1W/2.3k Ohms
Sensitivity: 120dB/4W/1M
Impedance: 8 Ohms
Size: 8.5" Dia. x 9" L



SPC15T



Weatherproof 10.25" 70/25 Volt Line Transformer P.A. Speaker

Frequency Response: 250-16 kHz
Power Rating: 30W
Transformer Taps: 30W, 15W, 10W, 5W, 3W, 1W
Sensitivity: 120dB/4W/1M
Impedance: 8 Ohms
Size: 10.25" L x 11" W x 8" H



SPC30RT



Weatherproof 6.25" x 11" 70/25 Volt Line Transformer P.A. Speaker

Frequency Response: 250-15 kHz
Power Rating: 32W RMS
Transformer Taps: 32W/153 Ohms, 16W/306 Ohms, 8W/612 Ohms, 4W/1225 Ohms, 2W/2450 Ohms
Sensitivity: 120dB/4W/1M
Impedance: 8 Ohms
Size: 13" L x 6.5" W x 11" H



SPC40RT



Weatherproof Alarm Sirens

5" x 8" Alarm Siren

- Bracket pivots to 90°
- Compact design
- 30 W, 120 dB
- Dual tone, warbling & steady
- Weatherproof ABS plastic
- Operates on 6-12V DC



SA15RP

4" Alarm Siren

- 20 watts, 120 dB
- Current 750 mA
- Warbling tone
- Weatherproof ABS plastic
- Operates on 6-12V DC



SA4P

5" Dual Tone Alarm Siren

- 20 watts, 115 dB
- Current 750 mA
- Warbling tone steady
- Weatherproof ABS plastic
- Operates on 6-12V DC



SA5P

Projection Horn Casings & Drivers

Create the perfect projection horn for your application by pairing our casings with our universal drivers

20" Aluminum Weatherproof Projector Horn For Use With SRD Drivers

- Size: 20" Dia. x 20.25" L
- Dispersion: 80°
- Low end cutoff: 250 Hz



SRH20

15" x 9" Aluminum Weatherproof Projector Horn For Use With SRD Drivers

- Size: 5" x 9" x 12.75" L
- Dispersion: 120° x 60°
- Low end cutoff: 250 Hz



SRH159R

80 Watt RMS Universal Driver w/ Built-In 70 Volt Line Transformer

Replacement voice coils avail.

Frequency Response: 300-5 kHz
Taps: 80, 40, 20, 10, 5
Power Rating: 80 W RMS, 100 W Max.
Sensitivity: 112 dB
Throat diameter: 1.375 x 18 TPI



SRD80T

100 Watt RMS Universal Driver

Replacement voice coils avail.

Frequency Response: 300-5 kHz
Taps: 80, 40, 20, 10, 5
Power Rating: 80 W RMS, 100 W Max.
Sensitivity: 112 dB
Throat diameter: 1.375 x 18 TPI



SRD100

	Item Code	Dimension	Ohms	RMS Power Rating	Frequency Response	Sensitivity	Transformer	Size	Casing
Amplified	ASPC20	Round	8 Ohms	20 W	500Hz-5kHz	105dB/1w/1m		6" Dia.	ABS Plastic
	SPC30RT	Round	8 Ohms	30 W	250Hz-15kHz	120dB/4V/1m	70/25V 30/15/10/5/3/1	10.25" L x 11" W x 8" H	ABS Plastic
	SPC40RT	Square	8 Ohms	40 W	250Hz-15kHz	120dB/4V/1m	70/25V 32/16/8/5/2	13" L x 6.5" W x 11" H	ABS Plastic
70/25 Volt Horns w/ Transformers	SPC15T	Round	8 Ohms	15 W	250Hz-15kHz	120dB/4V/1m	70/25V 15/10/5/3/1.3	8.5" Dia. x 6" L	Aluminum
Projection Horns Casings	SRH20	Round	8 Ohms		250Hz-15kHz			20" Dia. x 20.25" L	Aluminum
	SRH159R	Round	8 Ohms		250Hz-15kHz			15" x 9" x 12.75" L	Aluminum
Drivers for Projection Horns Casings	SRD80T		8 Ohms	80W	300Hz-5kHz	112 dB	70V 80/40/20/10/5	1.375" x 18 TPI	
	SRD100		8 Ohms	100W	250Hz-8kHz	113 dB		1.375" x 18 TPI	
Weatherproof PA Horns	SPC5P	Round	8 Ohms	15W	300Hz-15kHz	105 dB		5" Dia x 5" L	ABS Plastic
	SPC6P	Round	8 Ohms	15W	300Hz-15kHz	105 dB		5" Dia x 5" L	ABS Plastic
	SPC8	Round	8 Ohms	15W	300Hz-15kHz	105 dB		5" Dia x 5" L	Aluminum
	SPC10	Round	8 Ohms	10W	250Hz-15kHz	105 dB		6" Dia. X 6" L	Aluminum
	SPC104	Round	4 Ohms	10W	250Hz-15kHz	105 dB		6" Dia. X 6" L	Aluminum
	SPC15R	Square	8 Ohms	15W	200Hz-15kHz	110 dB		8" L x 8" W x 5" H	Aluminum
	SPC15	Round	8 Ohms	15W	200Hz-15kHz	110 dB		8" Dia. x 8" L	Aluminum
	SPC12RP	Square	8 Ohms	15W	200Hz-15kHz	110 dB		6" Dia. x 8" L	ABS Plastic
	SPC30	Round	8 Ohms	40W	300Hz-15kHz	110 dB		15" Dia. x 13" L	Aluminum
	SPC40RP	Square	8 Ohms	40W	200Hz-15kHz	120 dB		9" L x 6.5" W x 11" H	ABS Plastic
	SPC40RP4	Square	4 Ohms	40W	200Hz-15kHz	120 dB		9" L x 6.5" W x 11" H	ABS Plastic
	SPC15RP	Square	8 Ohms	15W	200Hz-15kHz	105 dB		9" L x 8" W x 5" H	ABS Plastic
	SPC15RP4	Square	4 Ohms	15W	200Hz-15kHz	105 dB		9" L x 8" W x 5" H	ABS Plastic
	SPC60RP	Square	8 Ohms	60W	200Hz-15kHz	120 dB		9" L x 8" W x 5" H	ABS Plastic

SOUND BYTES

Our monthly audio newsletter

has the latest in audio news, trends, training and products.

Register today at: www.specotech.com





SPCAVA60



for use with
Digital Deterrent™
Audio For Security or Retail Applications

The new Speco Technologies Alert Series P.A. horn has been specially designed for use in coordination with Speco Technologies' Digital Deterrent™ System for TH & PC Series DVRs.

A unique bright, blinking LED strobe that will activate when the Digital Deterrent™ notification from your Speco Technologies DVR has been triggered. *Prevent crime, don't just record it!*

- 200-15,000 Hz frequency response
- 60W max. power rating
- 8 Ohms impedance
- 9.25" L x 8" W x 4.5" H
- ABS Plastic

Digital Deterrent™ Audio Kit



WARNING!

YOU ARE UNDER SURVEILLANCE



THE DIGITAL DETERRENT™ SYSTEM HAS BEEN EXCLUSIVELY CREATED BY SPECO TECHNOLOGIES TO PREVENT CRIME, NOT JUST RECORD IT!



DIGITAL DETERRENT™ AUDIO KIT

CONTAINS:



SPCAVA60
This horn speaker features a powerful 60W horn & a flashing strobe.



PADA
60W Professional Series Amplifier

PADA
Power supply for strobe

PART# 0DAK1

USE ONE KIT PER DISTINCT AUDIO SIGNAL FROM DVR

EACH AUDIO CHANNEL CAN PLAY THE SAME OR DIFFERENT MESSAGES



PLAY FOUR, EIGHT OR SIXTEEN MESSAGES DEPENDING ON DVR MODEL



TH SERIES DVR
sold separately

6" ABS Plastic 20 Watt Amplified Weatherproof P.A. Speaker

- 3-16 Ohms input impedance
- 20W max. output audio
- 8 Ohms speaker Impedance
- Requires a 10-16V DC power supply
- 2 A, 3AG fuse
- Frequency Response: 500Hz-5kHz



ASPC20

Strobe Flasher



- 6-12V DC
- Weatherproof
- Base 3.75" D x 1.75" H
- Designed for intermittent use only

Blue **SFB12**
Red **SFR12**
Amber **SFA12**

12V DC 4 Amp Reg. Filtered Power Supply With 5 Amp Surge & Cigarette Lighter Adapter Built-In Front Panel

- Input: 117V AC / 60Hz
- Output: 12V DC
4 Amp constant, 5 Amp surge
- 7.5" L x 4.25" W x 2.6" H
- 4 lbs.



PSR4C

2-Way Wireless Intercom System

The ideal compact solution for inter-house communication or vestibule security clearance. This system has the convenience of a page/ call button and the freedom of hands-free operation. It additionally offers a choice of different volume levels and three separate communication channels allowing future system expansion. Just plug the two units into an in-wall, common AC electrical line. No complicated wiring is needed for instant communication.

- 2 Way Communication
- 3 Channels
- Hands-Free Operation
- Expandable System

- Page Feature
- Volume Control
- Easy to Install - simply Plug into shared AC Line



FM301B

Contains 2 units

70/25 Volt Volume Controls



Decorative Style Units
do not include outer wall plate

70/25 Volt Decorative Style Volume Controls & Accessories

- DVC1070** 10 Watt, 70 Volt, 10 Step Volume Control / Attenuator
DVC2570 25 Watt, 70 Volt, 10 Step Volume Control / Attenuator

70/25 Volt Wall Plate Volume Controls

Part #	Sound	Wattage	Output	Knob/Plate Color
WAT10	Mono	10	70/25V	Silver
WAT10W	Mono	10	70/25V	White
WAT50	Mono	50	70/25V	Silver
WAT50W	Mono	50	70/25V	White

Units with "W" come with white plastic plate & white knob - Units with a silver plate come with a black knob

8Ω Volume Controls found on page 35



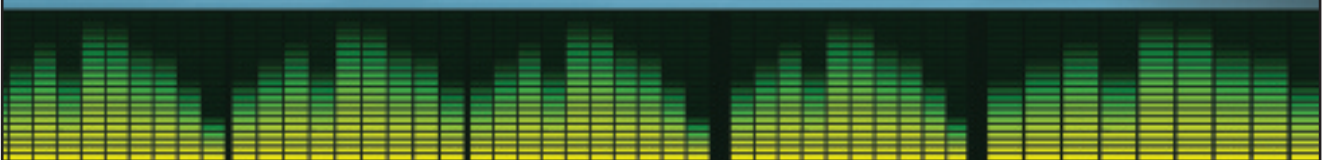
WAT10W



WAT50



Residential Audio



Commercial Audio begins on page 5



Designed to continue Speco Technologies' rich history of audio innovation, the Custom Builder Series Speakers have been created specifically for today's listening environments and lifestyles. Whether using them in the home or in the office, they will provide performance and reliability at an attractive price.

- **Compression molded, mineral filled polymer cone woofers with rubber surround**
- **Integrated c-clamp mounting system**
- **Powder coated metal grille may be painted to match any décor**
- **8Ω impedance**



5.25" In-Ceiling Speakers

- 5.25" Woofers
- Frequency Response: 70Hz-18kHz
- 50 Watt maximum power handling
- Impedance: 8 Ohms
- Dimensions: 8" Diameter
- Mounting Dimensions: 6.5" Dia.
- 2.5 lbs. each



Sold in pairs **SPCBC5**
Mounting Brackets **BRC5**

6.5" In-Ceiling Speakers

- 6.5" Woofers
- ½" liquid cooled titanium anodized dome tweeter in a zero diffraction pivoting island
- Frequency Response: 63Hz-21kHz
- 60 Watt maximum power handling
- Impedance: 8 Ohms
- Dimensions: 9" Diameter
- Mounting Dimensions: 7.5" Dia.
- 3.5 lbs. each



Sold in pairs **SPCBC6**
Mounting Brackets **BRC6**

8" In-Ceiling Speakers

- 8" Woofers
- ½" liquid cooled titanium anodized dome tweeter with a minimum diffraction pivoting island
- Frequency Response: 45Hz-21kHz
- 80 Watt maximum power handling
- Impedance: 8 Ohms
- Dimensions: 10.75" Diameter
- Mounting Dimensions: 9.5" Dia.
- 3.5 lbs. each



Sold in pairs **SPCBC8**
Mounting Brackets **BRC8**

Classic Series In-Ceiling Speakers

2-Way 6.5" Dual Voice Coil Speaker

- Dual Voice Coil
- 6.5" Woven Glass Woofer with Rubber Surround
- Two Silk Dome Tweeters
- 50 Watts RMS / 80 Watts Max.
- 60Hz-20kHz
- 8 Ohms
- 10 oz. Magnet
- EZ mounting tabs
- 9" Diameter x 3.25" D
- Mounting hole size: 7.75" Diameter



SP652CD Sold individually
BRC6 Mounting Brackets

2-Way In-Ceiling Enclosed Speaker Systems

Plastic enclosure back box offers extra component protection & consistent sound quality

6.5"

- Polypropylene cone woofer/mylar tweeter
- 35 Watts RMS/100 Watts max.
- Sensitivity: 90 dB (1W/1M)
- Frequency range: 65 - 20 kHz.
- 9.5" Diameter x 5.5" D
- Mounting hole size: 8.06" Diameter

SP6ECS Sold in pairs
BRC6F Mounting Brackets

8"

- Polypropylene cone woofer/mylar tweeter
- 35 Watts RMS/100 Watts max.
- Sensitivity: 92 dB (1W/1M)
- Frequency range: 50 - 20 kHz.
- 11" Diameter x 7" D
- Mounting hole size: 9.625" Diameter

SP8ECS Sold in pairs
BRC8F Mounting Brackets



We've utilized many years of sound expertise in developing the core of our in-wall/in-ceiling speakers: **The Series 25 Audio Line**. Manufactured from durable and quality components, they provide an exceptional value. Enjoy the premium performance of full-range sound in your listening environment with these high quality speakers.

5.25" In-Ceiling Speaker

- 5.25" Polypropylene woofer with rubber surround
- 3/4" Pivoting silk dome tweeter
- 70-20 kHz. frequency response
- 30W RMS power / 60W max.
- 8 Ohms Impedance
- 87 dB sensitivity 1w/1m
- 8" Diameter x 4" Depth
- Mounting dimensions:
6 5/8" Diameter
- 2.4 lbs. each



SP525C Sold in pairs
BRC5 Mounting Brackets

6.5" In-Ceiling Speaker

- 6.5" Polypropylene woofer with rubber surround
- 1" Pivoting silk dome tweeter
- 50 - 20 kHz. frequency response
- 40W RMS power / 80W max.
- 8 Ohms Impedance
- 89 dB sensitivity 1w/1m
- 9 1/4" Diameter x 4 1/4" Depth
- Mounting dimensions:
7 3/4" Diameter
- 3 lbs. each



SP625C Sold in pairs
BRC6 Mounting Brackets

8" In-Ceiling Speaker

- 8" Polypropylene woofer with rubber surround
- 1" Pivoting silk dome tweeter
- 49 - 20 kHz. frequency response
- 50W RMS power / 100W max.
- 8 Ohms Impedance
- 89 dB sensitivity 1w/1m
- 11" Diameter x 5" Depth
- Mounting dimensions:
9 1/2" Diameter
- 4 lbs. each



SP825C Sold in pairs
BRC8 Mounting Brackets

In-Ceiling Speaker Selection Guide

Prime Purpose	Series Name	Model No.	Woofer Size	Description	Selling Unit	Woofer	Tweeter	Power (RMS/Max.)	Frequency
Everyday Power In-Ceiling Speakers	Custom Builder Series	SPCBC5	5.25"	Round In-Ceiling	Pair	Mineral Polymer	Whizzer	40 Max.	70Hz-18kHz
		SPCBC6	6.5"	Round In-Ceiling	Pair	Mineral Polymer	Pivoting Titanium Cone	60 Max.	63Hz-21kHz
		SPCBC8	8"	Round In-Ceiling	Pair	Mineral Polymer	Pivoting Titanium Cone	80 Max.	45Hz-21kHz
All-Time Best Sellers	Speco Classic Series	SP6ECS	6.5"	Enclosed, Round In-Ceiling	Pair	Polypropylene	Mylar Dome Tweeter	35/100	65Hz-20kHz
		SP8ECS	8"	Enclosed, Round In-Ceiling	Pair	Polypropylene	Mylar Dome Tweeter	35/100	50Hz-20kHz
Great Sound, Best Value	series 25 audio speaker line	SP525C	5.25"	Round In-Ceiling	Pair	Polypropylene	Pivoting Silk Dome	30/60	70Hz-20kHz
		SP625C	6.5"	Round In-Ceiling	Pair	Polypropylene	Pivoting Silk Dome	40/80	50Hz-20kHz
		SP825C	8"	Round In-Ceiling	Pair	Polypropylene	Pivoting Silk Dome	50/100	49Hz-20kHz
Full Range Sound For Small Areas	Dual-Voice Coil	SP652CD	6.5"	Round In-Ceiling	Individually	Fiberglass	2 Silk Dome Tweeters	50/80	60Hz-20kHz

Designed with premium specifications and stylishly cut cabinets, these weatherproof speakers deliver the performance and quality our customers have come to expect from Speco Technologies.

Our All-Weather Outdoor Speakers Offer Great Aesthetics and Superb Sound At a Competitive Price Point.



Elite Series



NEW
4"
SP4AWEW (White)
SP4AWE (Black)
SOLD IN PAIRS

Extreme Series



5.25"
SP5AWXW (White)
SP5AWX (Black)
SOLD IN PAIRS



6.5"
SP6AWXW (White)
SP6AWX (Black)
SOLD IN PAIRS

(shown without grille)

Description

4" Indoor/Outdoor Speakers

Woofers

4" Mica/Polypropylene Cone

Tweeter

.75" Silk Dome Tweeter

Frequency

75Hz-20kHz

Sensitivity

84 dB 1 w/1m

Wattage

25 Watts RMS / 40 Watts Max.

Dimensions

9.5" H x 6" L x 6.5" D

Weight

4.85 lbs.

Impedance

8 Ohm

5.25" Indoor/Outdoor Speakers

5.25" Polypropylene
with Rubber Surround

.75" Silk Dome Tweeter

75Hz-20kHz

88 dB 1 w/1m

40 Watts RMS / 80 Watts Max.

9" H x 6" W x 6 1/4" D

4.35 lbs. each

8 Ohm

6.5" Indoor/Outdoor Speakers

6.5" Polypropylene
with Rubber Surround

1" Silk Dome Tweeter

60Hz-20kHz

90dB 1w/1m

50 Watts RMS / 100 Watts Max.

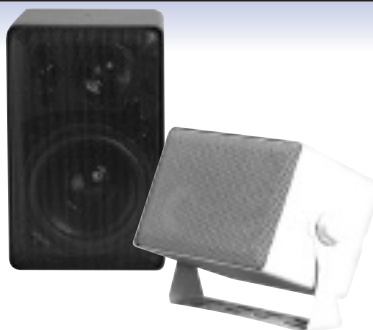
11" H x 7" W x 6 3/4" D

5.5 lbs. each

8 Ohm

**Elite & Extreme Series All-Weather Speakers are also available
in models with transformers - see page 18**

3-Way Indoor / Outdoor All-Purpose Speakers with Polypropylene Cones



- 8 Ohms
- Frequency response: 55 - 20 kHz
- 30 Watt RMS per channel, 50 Watt max per channel
- Includes brackets
- 4.4" L x 4.5" W x 7.25" H

Sold in pairs (Black)
Sold in pairs (White)

DMS3P
DMS3PW

Sold in pairs

Item Code	Description	Outer Dimensions	Cut-Out Dimensions	Corresponding Speakers
BRC6F	Metal In-Ceiling Brackets for 6.5" Speakers	16 3/4", 2' support rails	8 3/8"	SP6ECS, SP5MAT, SP6CLC
BRC8F	Metal In-Ceiling Brackets for 8" Speakers	16 3/4", 2' support rails	9 7/8"	SP8ECS, SP6MAT
BRC5	Metal In-Ceiling Brackets for 5.25" Speakers	16 3/4", 2' support rails	6 5/8"	SPCBC5
BRC6	Metal In-Ceiling Brackets for 6.5" Speakers	16 3/4", 2' support rails	7 3/4"	SP652CD, SPCBC6, SPG66T, SPG66TC
BRC8	Metal In-Ceiling Brackets for 8" Speakers	16 3/4", 2' support rails	9 1/2"	SPCBC8, SPG86T, SPG86TC
BRC8L	Metal In-Ceiling Brackets for 8" Speakers	16 3/4", 2' support rails	10"	SP8CLC
BRW6	Metal In-Wall Brackets for 6.5" Speakers	16 3/4", 2' support rails	7 1/2" x 11"	SP625W, SP602A, SP622, SP6CLW
BRW8L	Metal In-Wall Brackets for 8" Speakers	16 3/4", 2' support rails	9" x 13"	SP8CLW
BRW8SW*	Metal In-Wall Brackets for 8" Subwoofer	16 3/4", 2' support rails	9" x 9"	SP8CLSW

* Subwoofer bracket sold individually



BRC6/8F



BRC5/6/8/8L



BRW6/8L

In-wall back box items (SP525BB, SP625BB, SP825BB) not designed to be used with support brackets.

All brackets manufactured from .025" thick galvanized steel.

Six Pair Stereo Speaker Distribution Center

- Accommodates 6 pairs of speakers
- 50 Watts RMS per channel
- Premium autoformers provide efficient impedance matching and low power loss
- Independent On/Off Switch for each zone
- A/B source selector switches for each zone
- Convenient pushbutton terminals that accept up to 14 gauge wire

- Separate left and right ground paths for compatibility with all amps
- Quality steel housing design
- Dimensions: 17" W x 2.2" H x 6" D
- Weight: 7.9 lbs.

SDC6VCA



Four Pair 50 Watts RMS Per Channel Stereo Speaker Distribution Center

- Accommodates 4 pairs of speakers
- 50 watts RMS per channel
- Premium autoformers provide efficient impedance matching and low power loss
- Independent On/Off Switch for each zone
- A/B source selector switches for each zone
- Convenient pushbutton terminals that accept up to 14 gauge wire

- Separate left and right ground paths for compatibility with all amps
- Quality steel housing design
- Dimensions: 17" W x 2.2" H x 6" D
- Weight: 7.9 lbs.

SDC4VCA



Four Pair 150 Watts RMS Per Channel Stereo Speaker Distribution Center

- 150 Watts RMS per channel
- Accommodates up to 4 pairs of speakers
- Independent on/off switches for each zone
- Quality steel housing design
- 7.6" W x 2.5" H x 5.8" D
- 1.94 lbs.



(rear of unit)

SSB4

Six Pair 600 Watts RMS Per Channel Stereo Speaker Distribution Center

- High power handling: 300 Watts RMS / 600 Watts max. per channel
- 2 amplifier input
- Controls 6 pairs of speakers
- For 4,6,8 Ohms systems
- Impedance matching
- Circuit breaker protection

- Output switching from amplifier A or B to 6 independently controlled pairs of speakers
- Quick disconnect connectors
- 17" L x 6" W x 3" H

SLS6



100 Watts RMS Per Channel Stereo Speaker Distribution Center

- 100 watts RMS power handling per channel - 300 watts max.
- Allows for easy expansion for 1 pair of amplifier speaker outputs to up to 8 pairs of speaker outputs (1 pair in to 8 pair out)
- 15" L x 1.5" W x 3.25" H

SDS8





100 Watt Impedance Matching Slider Volume Control

- High-quality auto-former design • 1 to 8 speaker pairs
- Switchable impedance matching 2x, 4x, or 8x positions and stereo non-impedance matching 1x position • Soft touch 12-step slide attenuation
- Frequency response: 20Hz to 20kHz • Removable terminal blocks accept up to 14-Gauge wire
- Mounting requirements: fits all single-gang backless P-rings or 19 cubic inch min. electrical work box • Mounting dimensions: 1.63" W x 2.74" H x 2.66" D

100 Watt Power Handling **IMP100DLWH**



80 Watt Impedance Matching Rotary Volume Control

- Includes three knob/plate color variations: white, ivory and almond
- High-quality auto-former design • 2 to 16 speaker pairs
- Switchable impedance matching for 2, 4, 8 or 16 pairs of 8 ohm speakers
- Soft touch 12-step rotary attenuation • Frequency response: 20Hz to 20kHz
- Removable terminal blocks accept up to 14-Gauge wire
- Mounting requirements: fits all single-gang backless P-rings or 18 cubic inch min. electrical work box • Mounting dimensions: 1.63" W x 2.85" H x 2.35" D

80 Watt Power Handling **IMP80D**



Weatherproof Volume Control Enclosure For IMP80D

- Rugged composite enclosure resists the harsh effects of nature
- Offset inlet accepts ¾" PVC conduit
- Includes stainless steel hardware
- Dimensions: 3" W x 5" H x 3 ¾" D

VCODK1

Decorative Style 8Ω Volume Controls and Accessories



WAT258W

DVC10D8
DVC25D8
DVC40D8
DVC50D8P

10 Watt Stereo Volume Control, 8 Ohms
25 Watt Stereo, 10 Step, 8 Ohms Volume Control/Attenuator
40 Watt Stereo Volume Control, 8 Ohms
50 Watt Stereo Volume Control, 8 Ohms



WAT50D8

8Ω Wall Plate Volume Controls

Part #	Sound	Wattage	Output	Knob/Plate Color
WAT108	Mono	10	8 Ohm	Silver
WAT258W	Mono	25	8 Ohm	White
WAT25D8W	Stereo	25	8 Ohm	White
WAT50D8*	Stereo	50	8 Ohm	Silver

*Double Gang

Units with "W" come with white plastic plate & white knob
Units with a silver plate come with a black knob

70/25V volume controls found on page 28

5.1 System: A designation describing a sound system incorporating 5 channels of sound/ speakers and one subwoofer.

Amp: The unit of measure used with an electric current.

Amplifier: An electronic component or device that takes low-level signals and recreates the signal with more power.

Attenuators: A device that reduces an amplified signal without distortion.

Baffle: A box-like structure that a speaker is placed into to enhance the bass sound of the speaker.

Bass: The lowest audible existing frequency range usually below 200 Hz.

Bookshelf Speaker: A small speaker which is designed to sit on a bookshelf or shelf.

Capacitors: Electrical devices that store charges.

Center Channel: A third front audio channel that is usually used to enhance the clarity of dialog being heard within a sound system.

Coaxial Speaker: A type of speaker driver where the high frequency driver (the tweeter) is located inside a low or mid-frequency driver (the woofer).

Crossover: A component that splits up the frequency depending on ranges and directs them to certain drivers.

Current: The flow of electricity through a circuit as measured in amps.

dB Decibel: A logarithmic scale measuring the intensity of the sound pressure level of a noise.

Digital Surround Sound:
See 5.1. definition

Driver: The cone-like component of a speaker that pushes back and forth to sound waves.

Dual Voice Coil: A speaker that accepts both right and left channels into one speaker providing full range sound in a smaller space than two speakers.

Floor Standing Speaker: A specific type of speaker enclosure with an acceptable level of sound height that stands directly on the floor.

Frequency: The number of repeating sound cycles in a given period, measured in hertz or kilohertz. Human hearing is usually 20Hz to 20KHz with the lower frequencies representing the bass and higher representing the treble.

Grille: An aesthetic front plate covering for speakers.

Horn: An element used to increase sound efficiency by placing the driver at the end of a megaphone-like structure.

Hz (Hertz): Number of cycles per second of sound waves used to measure frequency.

Impedance: The resistance to the flow of an electrical current as measured in Ohms.

kHz (Kilohertz): One thousand sound cycles per second.

Magnet: A component of a speaker that uses electromagnets to create movement of the driver reproducing sound.

Microphone: A device used to create an electrical signal representative of the sound striking it to be heard over speakers.

Midrange: The middle band of audio frequencies between 150/200 Hz to between 1,000/2,000 Hz.

Music on Hold Feature: An amplifier output feature which allows callers on a phone system that are holding to hear music or supplied dialog.

Ohm: A measure of resistance in a circuit to an electric current.

Outdoor Speaker: A speaker that is weatherproofed.

Power Rating: The maximum amount of power in watts that an amplifier can put out or a speaker can be driven with.

RMS (Root Mean Square):

The average continuous power output an amplifier is capable of producing or a speaker is capable of receiving.

Subwoofer: A type of speaker used to reproduce the lowest portion of the frequency spectrum, usually 80Hz and below.

Sensitivity or SPL: A measure of the sound pressure level measured from a distance of one meter from a speaker when the speaker receives a 2.83-volt signal - 1 watt at 8 ohm.

Shielded: A term relating to specific speakers having their magnetic fields contained as to not harm video displays.

Three-Way Speaker: A speaker system containing three individual drivers covering three frequency bands.

Transformer: An important component of the power supply that pulls electricity from a source and then transforms it into power that can be used in electronic devices.

Tweeter: A speaker driver designed for receiving high frequencies usually above 2,000 Hz.

Two-Way Speaker: A speaker system with two individual drivers covering two frequency bands.

Voice Coil: A tightly wrapped coil of wire attached to a speaker driver's diaphragm and located near the stationary magnet.

Watt: A measurement of power obtained by multiplying current by voltage.

Woofer: A speaker driver that handles low frequency signals.

XLR Connector: A plug connector usually at the end of a microphone wire that allows easy connection to an amplifier without the need to strip the wire to connect it to screw terminals.

Looking for an alternative to an existing or discontinued Speco Technologies part number? The guide below may help. If your part number is not listed below, please contact our Customer Service Department at 1-800-645-5516.

Speco Part #	Replacement Speco Part #*	Speco Part #	Replacement Speco Part #*
DM520	DM520P	SP5AWD	SP5AWX
ER340	ER370	SP5AWDT	SP5AWXT
ER360	ER370	SP5AWDTW	SP5AWXTW
ER380	ER370	SP5AWDW	SP5AWXW
ER390	ER370	SP5C	SPCBC5
ER500	ER370	SP5INFC	SP525C
G10FT70GW	G86TG	SP5NXCT	SP5NXCTUL
G810AT70GW	G86TG	SP6AWD	SP6AWX
G810CT70GW	G86TG	SP6AWDT	SP6AWXT
G86FT70GW	G86TG	SP6AWDTW	SP6AWXTW
IMP100D	IMP80D	SP6AWDW	SP6AWXW
IMP75DL	IMP100DLWH	SP6C	SPCBC6
MCDT300	MCDT300A	SP6INFC	SP625C
MCHH100	MCHH100A	SP6NXCT	SP6NXCTUL
MHL1	MCHH150	SP8C	SPCBC8
MWHHUHF**	MUHFFH**	SP8INFC	SP825C
MWLPUHF**	MUHFLP**	SPRK6B	SPRK65CB
MWR100UHF**	MUH100**	SPRK6G	SPRK65CG
P30A	PBM30	SPRK8B	SPRK65CB
SP35X	SP4WE	SPRK8G	SPRK65CG
SP35XT	SP4AWET	WAT25	WAT50
SP35XTW	SP4AWETW	WAT35	WAT50
SP35XW	SP4AWEW		

* Please note that in many cases, the substitution may not exactly match the original. We are simply suggesting the closest match.

** Please note that these wireless microphones and receivers are on different frequencies and are not directly compatible with each other.

A6X6A70	4	MCA20	21	SFB12	28	SPC6P	24
A6X6A8	4	MCBM300	A6	SFR12	28	SPC8	24
AES4	19	MCDT300A	21	SLS6	34	SPCAVA60	27
AIE	4	MCHH100	A6	SP30PT	17	SPCBC5	30
AKPA	4	MCHH100A	21	SP30PTB	17	SPCBC6	30
ASPC20	28	MCHH150	21	SP4AWE	18, 32	SPCBC8	30
BI2SD	A5	MCHH300	A6	SP4AWET	18	SPCBDVC5	A7
BI2SWD	A5	MCHM300	A6	SP4AWETW	18	SPCBW6	A7
BRC5	A7, 30, 31, 33	MCPP100	22	SP4AWEW	18, 32	SPCT8T	17
BRC6	A6, 30, 31, 33	MGS1	21	SP4NXCT	A4	SPG66T	16
BRC6F	A7, 13, 30, 33	MHL5S	21	SP50W	A8	SPG66TC	16
BRC8	16, 30, 31, 33	MMB3XLR	22	SP525C	31	SPG86T	16
BRC8F	A7, 13, 30, 33	MPC2	A6	SP5AWX	32	SPG86TC	16
BRC8L	33	MPC3	A6	SP5AWXT	18	SPRK65CB	A8
BRRW8SW	A7	MSA1	21	SP5AWXTW	18	SPRK65CBT	A8
BRW6	A7, 33	MSD5	21	SP5AWXW	32	SPRK65CG	A8
BRW6F	A8	MSR5	A6	SP5CLCC	A7	SPRK65CGT	A8
BRW8F	A8	MSR5	21	SP5CRW	A7	SPRK8B	A8
BRW8L	33	MST1	A6	SP5MAT	13	SPRK8G	A8
BRW8SW	33	MUHF100	20	SP5NXCT	A4	SRD100	25
CAMMIC	22	MUHFHH	20	SP5NXCTUL	14	SRD35T	A5
CBS240	19	MUHFLP	20	SP625BB	A8	SRD50	A5
CBS4	19	MWHSLC	20	SP625C	31	SRD75	A5
DDAK1	27	P120FACD	A1	SP625W	A8	SRD80T	25
DM520	A6	P240A	A1	SP652CD	30	SRH159R	25
DMS20P	21	P240FACD	6	SP6AWX	32	SRH16	A5
DMS3P	32	P30FA	7	SP6AWXT	18	SRH20	25
DMS3PW	32	P30FACD	A1	SP6AWXTW	18	SSB4	34
DMS3TS	18	P40A	11	SP6AWXW	32	SSS1	22
DMS3TSW	18	P60FACD	7	SP6CLC	A7	STH8	15
DVC1070	28	PAP160A	12	SP6CLW	A8	T20	22
DVC10D8	35	PAT20TB	11	SP6ECS	30	T2510	22
DVC10DB	A8	PAW80A	A1	SP6MAT	13	T7010	22
DVC200	A8	PAW80ST	A1	SP6NXCTUL	14	T7020	22
DVC2570	A8	PBM120	A2	SP825BB	A8	T70255	22
DVC25D8	35	PBM15	A2	SP825C	31	TLT1	22
DVC40D8	35	PBM30	10	SP8CLC	A7	TS8	15
DVC50D8P	35	PBM60	A2	SP8CLSW	A7	U260SX	19
ER340	A3	PBMRK1	A2, 10	SP8CLW	A8	U260X	A4
ER360	A3	PBMRK2	A1, A2, 7, 9, 10	SP8ECS	30	U265X	A4
ER370	11	PFA	11	SPC10	24	UTPAUDIO	22
ER390	A3	PL120SA	A2	SPC104	24	VC0DK1	35
ER500	A3	PL200M	8	SPC12RP	24	WAT10	28
FM301B	28	PL260A	9	SPC15	24	WAT10B	35
FSA35	A4	PL60SA	A2	SPC15R	24	WAT10D8W	A6
FSG35	A4	PMM120A	10	SPC15RP	24	WAT10W	28
G12WD	A3	PMM60A	10	SPC15RP4	24	WAT258W	35
G810AT70GW	A3	PSR40S	A6	SPC15T	25	WAT25D8W	35
G810CT70GW	A3	PSR4C	28	SPC20	A4	WAT50	28
G810FT70GW	A3	PZ5	11	SPC20R	A4	WAT50DB	35
G86FT70GW	A3	SA12RP	A5	SPC30	24	WAT50W	28
G86TCG	15	SA15RP	25	SPC30RT	25	WB8	A3
G86TG	15	SA4P	25	SPC40RP	24	WB810F70	A3
G8CA10WX	A3	SA5P	25	SPC40RP4	24	WB86D	16
IMP100DLWH	35	SDC4VCA	34	SPC40RT	25	WB8625	A3
IMP80D	35	SDC6VCA	34	SPC5P	24	WB86D25	A3
MAD11F	A6	SDS8	34	SPC5P4	A5		
MCA10	21	SFA12	28	SPC60RP	A5		

AMPLIFIERS:

These products are warranted against manufacturing defects in material and workmanship for five (5) years including parts and labor.

INDOOR SPEAKERS:

These products are warranted against manufacturing defects in material and workmanship for the lifetime of the product, including parts and labor.

OUTDOOR SPEAKERS:

These products are warranted against manufacturing defects in material and workmanship for five (5) years including parts and labor.

PA HORNS, MICROPHONES & VOLUME CONTROLS:

These products are warranted against manufacturing defects in material and workmanship for two (2) years from date of purchase including parts and labor.

MEGAPHONES, SPEAKER DISTRIBUTION CENTERS & SPEAKER SELECTORS:

These products are warranted against manufacturing defects in material and workmanship for one (1) year including parts and labor.

OTHER AUDIO ITEMS NOT COVERED ABOVE:

These products are warranted against manufacturing defects in material and workmanship for ninety (90) days including parts and labor.

We warrant all products to be free from any manufacturing or material defects. This warranty will not extend to any products which have been subjected to misuse, neglect, accident, or improper installation, used in violation of instructions furnished by us; or to units which have been repaired or altered outside of the factory. This limited warranty does not apply to broken cases, batteries, or other physically damaged parts. Upon request by the customer, the company will at the customer's expense repackage merchandise in new cartons, replace missing accessories, and return in resalable condition. Unless requested, the company will replace and return all merchandise in the packaging in which it was received. This warranty is in lieu of all expressed warranties, expressed or implied, and of all obligations or liability on our part, and we neither assume nor authorize any representative or other person to assume for us any obligation or liability. In no event shall we be liable for incidental or consequential damages arising from the use of the product, or for any delay in the use of this product do to causes beyond our control. Some states do not allow limitations of how long an implied warranty lasts and/or do not allow the exclusion or limitation of consequential damages. The above limitations on implied warranty and consequential damages may not apply to you. This warranty gives you specific legal rights. You may have other rights which vary from state to state. See actual warranty statement included with product for limitations and exclusions where applicable. This limited warranty extends to products listed in the company's current price schedule.

RETURNS

A written return authorization must be obtained prior to shipment. Label(s) must appear on all packages and return must be ship prepaid.

Defective in-warranty products will be returned prepaid. Defective out-of-warranty products will be repaired at a nominal charge for parts and labor and returned with shipping charges added to the invoice. If you require an estimate before repair, please request.

RETURNED GOODS POLICY

1. RETURNS SENT WITHOUT PRIOR APPROVAL WILL NOT BE ACCEPTED. CREDIT WILL BE ISSUED UPON INSPECTION OF RETURNED UNITS.
2. No discounted item may be returned for credit or exchange.
3. An order of \$3.00 for every \$1.00 to be returned must accompany a request for return for stock adjustment.
4. There will be a minimum charge of 15% for handling and repacking where necessary. Merchandise returned for credit or exchange with missing or damaged packaging or accessories will be charged accordingly. Merchandise returned for repair will be shipped back repaired but in the same physical condition as when received by us. If repacking or refurbishing is requested, where possible, you will be charged accordingly.
5. If a credit is issued, current best quantity price or price when purchased, whichever is lower, will prevail.



Scott Pisani
Product Manager, Audio

"SPECO TECHNOLOGIES HAS ALWAYS BEEN AN INNOVATOR TO PROVIDE SOLUTIONS TO MEET OUR CUSTOMERS' VARIED NEEDS. WHEN IN-WALL AND IN-CEILING SPEAKERS WERE FIRST EVOLVING, SPECO WAS AT THE FOREFRONT. WE CONTINUE TO FOCUS ON FEATURES AND PRODUCTS THAT WILL MAKE YOUR JOB EASIER."

200 NEW HIGHWAY,
AMITYVILLE, NY, 11701

TOLL FREE: 1-800-645-5515
METRO NY: 631-957-8700

CONTACT US AT:
WWW.SPECOTECH.COM

speco technologies®

AUDIO 11



0 30519 00063 5